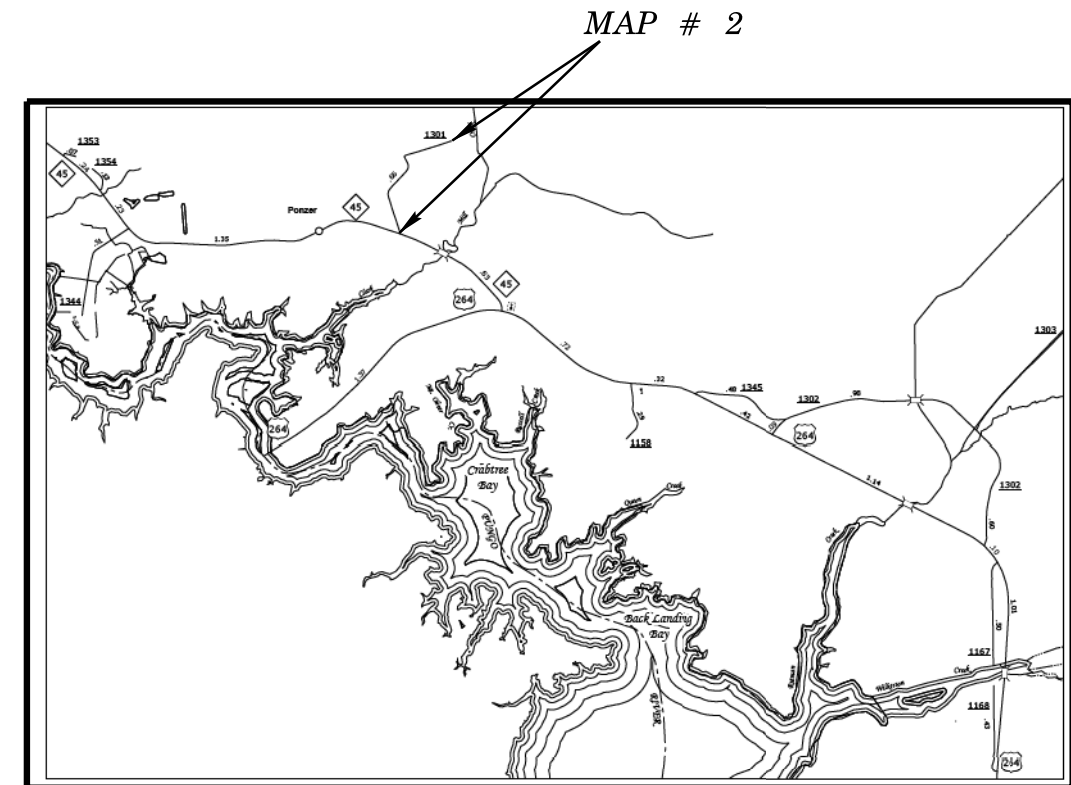
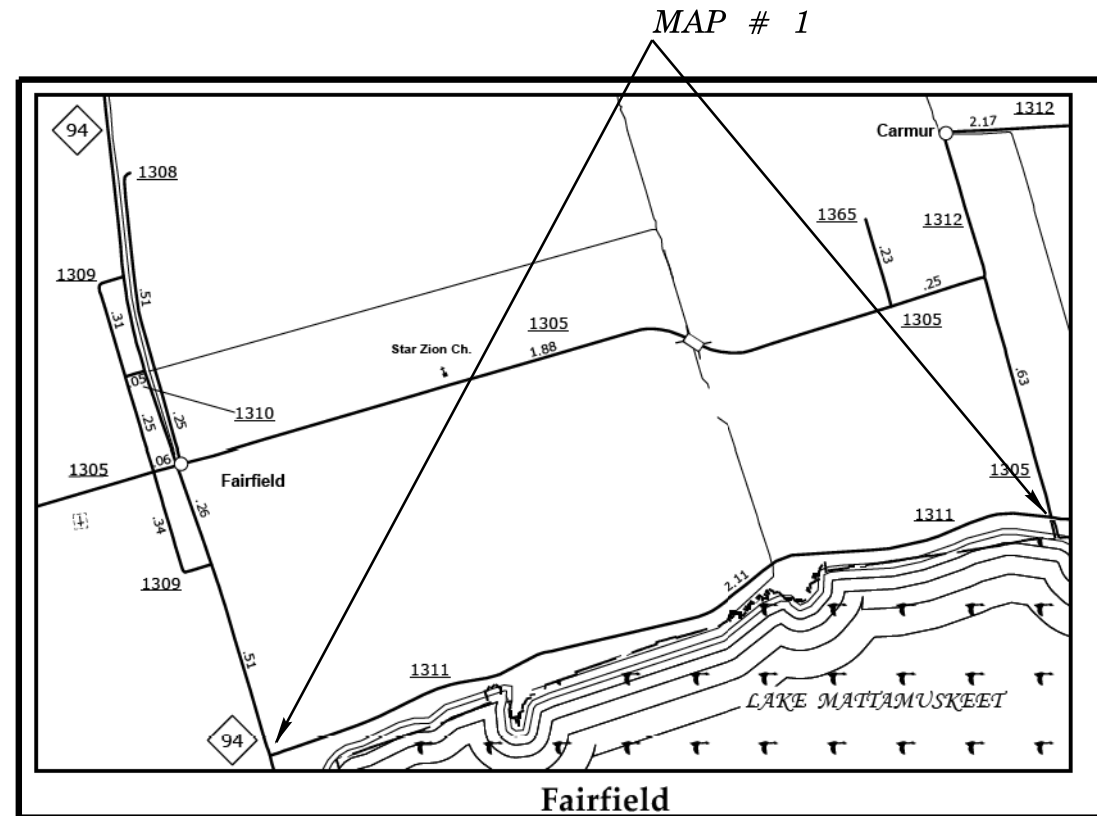


STATE	STATE PROJECT REFERENCE NO.	SHEET NO.	TOTAL SHEETS
N.C.	2017CPT.01.05.20481.1 ETC.	1	
STATE PROJ.NO.	F.A.PROJ.NO.	DESCRIPTION	

STATE OF NORTH CAROLINA
DIVISION OF HIGHWAYS

HYDE COUNTY

LOCATION: MAP #1 SR 1311 (FROM NC 94 TO SR 1305)
MAP #2 SR 1301 (FROM NC 45 TO DEAD END)
TYPE OF WORK: RESURFACING



CONTRACT NO.: DA00304 WBS ELEMENT.: 2017CPT.01.05.20481.1 ETC.

NOT TO SCALE

PROJECT LENGTH

MAP#1 WBS# 2017CPT.01.05.20481.1 = 2.08 MILES
MAP#2 WBS# 2017CPT.01.05.20481.1 = 0.57 MILES

Prepared in the Office of:
DIVISION OF HIGHWAYS

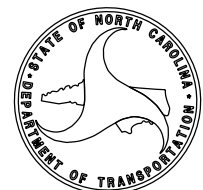
2012 STANDARD SPECIFICATIONS

LETTING DATE:

W.B. HOBBS, P.E.
DIVISION PROJECT MANAGER

C.E. SLACHTA
DIVISION PROPOSALS ENGINEER

DIVISION OF HIGHWAYS
STATE OF NORTH CAROLINA



STATE	STATE PROJECT REFERENCE NO.	SHEET NO.	TOTAL SHEETS
N.C.	2017CPT.01.05.20481.1 ETC	2	
STATE PROJ.NO.	F.A.PROJ.NO.	DESCRIPTION	

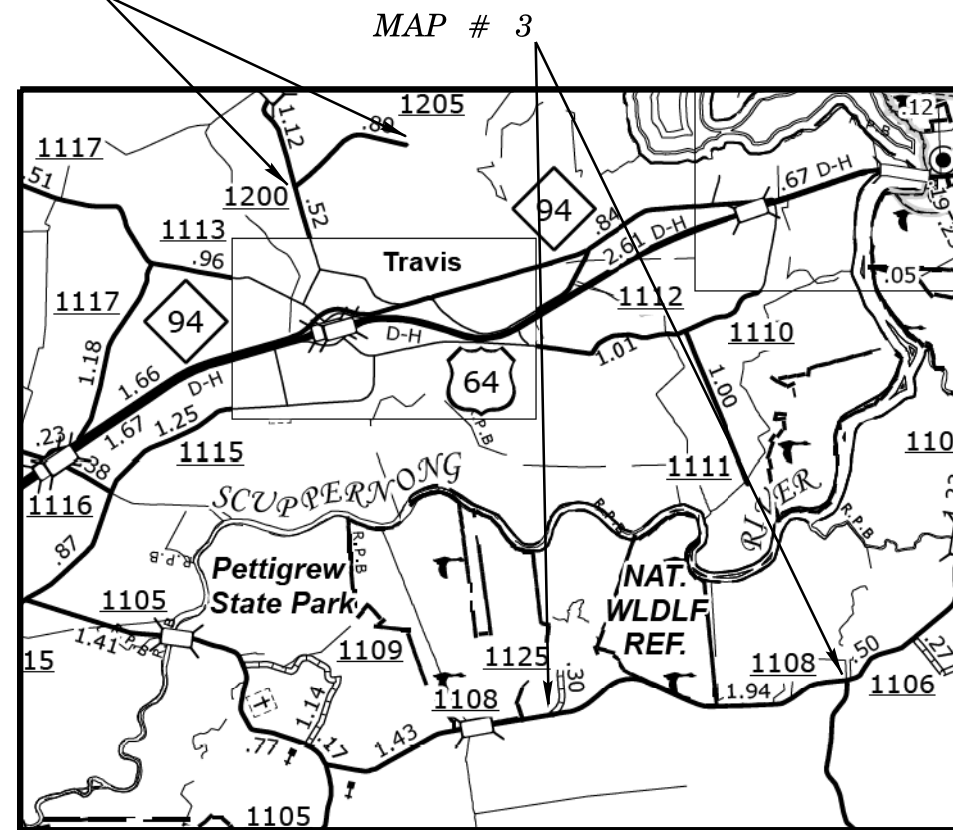
STATE OF NORTH CAROLINA
 DIVISION OF HIGHWAYS

TYRRELL COUNTY

LOCATION: MAP #3 SR 1108 (FROM SR 1105 TO SR 1125) /MAP #4 SR 1209 (FROM US 64 TO SR 1246)
 MAP #5 SR 1246 (FROM US 64 BUS. TO DEAD END)/MAP #6 SR 1205 (FROM SR 1200 TO DEAD END)

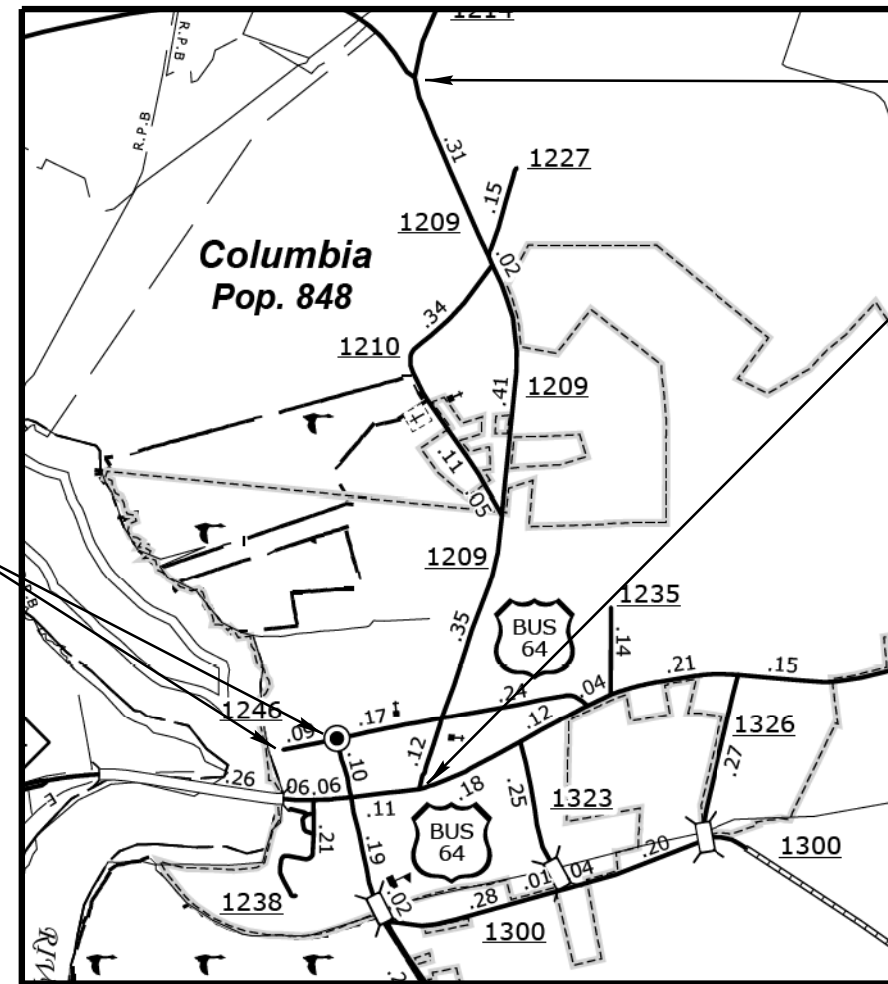
TYPE OF WORK: MILLING RESURFACING

MAP # 7



MAP # 3

MAP # 6



MAP # 4, 5

CONTRACT NO.: DA00304 WBS ELEMENT.: 2017CPT.01.05.20481.1 ETC.

NOT TO SCALE

PROJECT LENGTH

MAP#3 WBS# 2017CPT.01.05.20891.1 = 1.92 MILES
 MAP#4 WBS# 2017CPT.01.05.20891.1 = 0.42 MILES
 MAP#5 WBS# 2017CPT.01.05.20891.1 = 0.74 MILES
 MAP#6 WBS# 2017CPT.01.05.20891.1 = 0.09 MILES
 MAP#7 WBS# 2017CPT.01.05.20891.1 = 0.81 MILES

Prepared in the Office of:
DIVISION OF HIGHWAYS

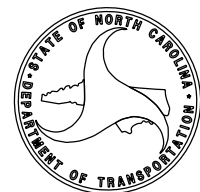
2012 STANDARD SPECIFICATIONS

LETTING DATE:

W.B. HOBBS, P.E.
 DIVISION PROJECT MANAGER

C.E. SLACHTA
 DIVISION PROPOSALS ENGINEER

DIVISION OF HIGHWAYS
 STATE OF NORTH CAROLINA



STATE	STATE PROJECT REFERENCE NO.	SHEET NO.	TOTAL SHEETS
N.C.	2017CPT.01.05.20481.1 ETC.	3	
STATE PROJ. NO.	F.A. PROJ. NO.	DESCRIPTION	

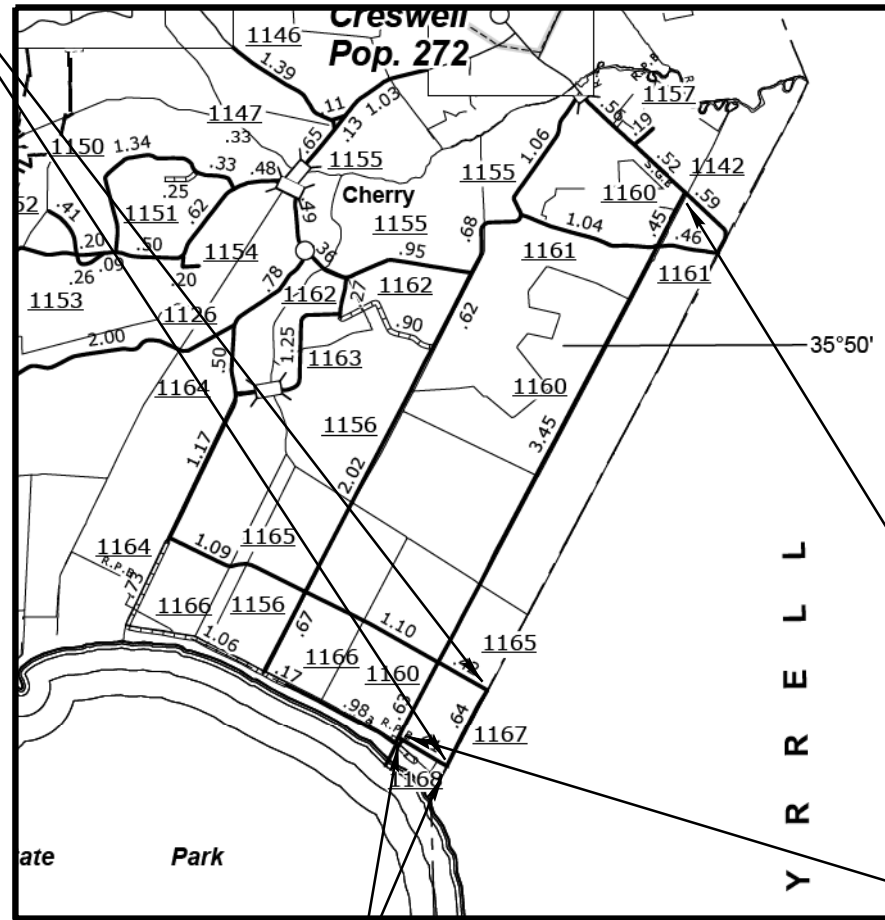
STATE OF NORTH CAROLINA
DIVISION OF HIGHWAYS

WASHINGTON COUNTY

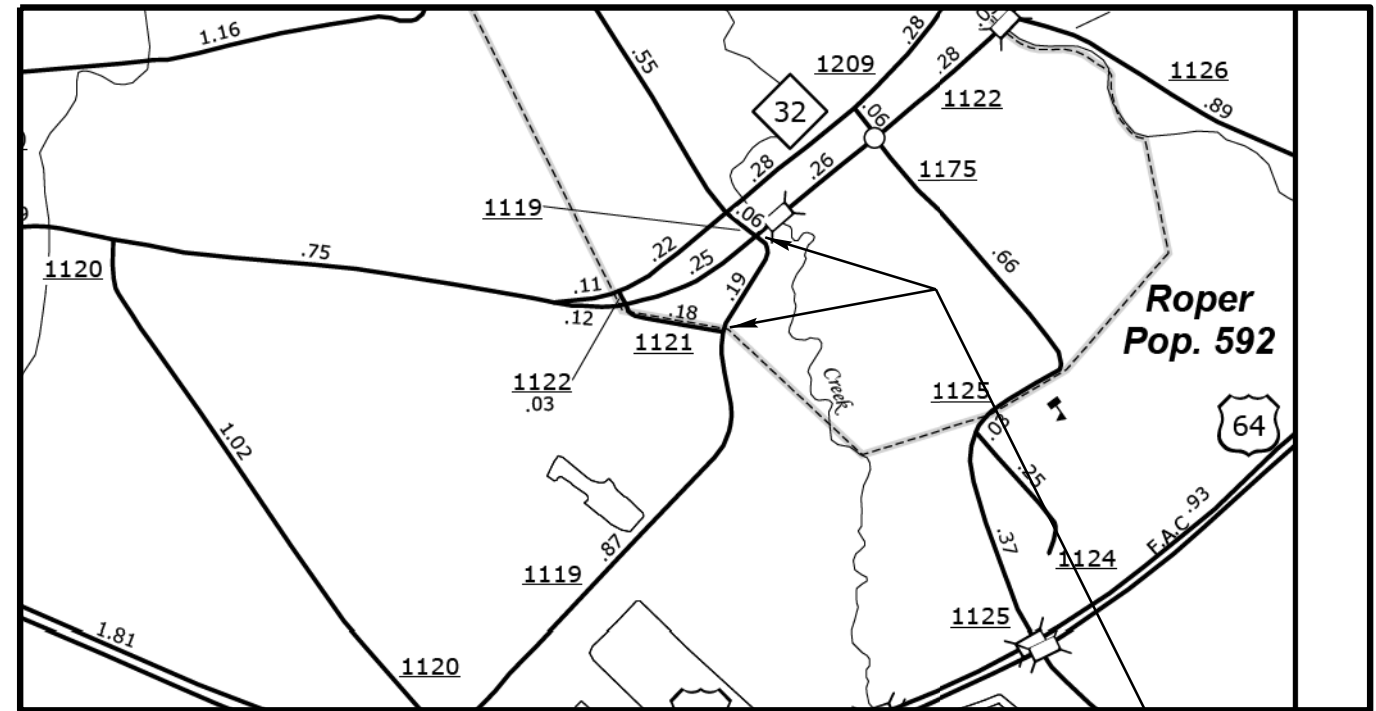
LOCATION: MAP #8 SR 1160 (FROM SR 1142 TO SR 1166) /MAP #9 SR 1119 (FROM SR 1122 TO SR 1121)
MAP #10 SR 1167 (FROM SR 1168 TO SR 1165) MAP #11 SR 1168 (FROM SR 1160 TO SR 1167)

MAP # 10

TYPE OF WORK: RESURFACING



MAP # 11



MAP # 9

MAP # 8

CONTRACT NO.: DA00304 WBS ELEMENT.: 2017CPT.01.05.20481.1 ETC.

NOT TO SCALE

PROJECT LENGTH

MAP#8 WBS# 2017CPT.01.05.20941.1 = 4.60 MILES
MAP#9 WBS# 2017CPT.01.05.20941.1 = 0.17 MILES
MAP#10 WBS# 2017CPT.01.05.20941.1 = 0.65 MILES
MAP#11 WBS# 2017CPT.01.05.20941.1 = 0.41 MILES

Prepared in the Office of:
DIVISION OF HIGHWAYS

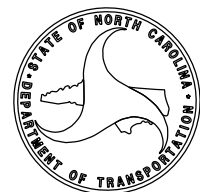
2012 STANDARD SPECIFICATIONS

LETTING DATE:

W.B. HOBBS, P.E.
DIVISION PROJECT MANAGER

C.E. SLACHTA
DIVISION PROPOSALS ENGINEER

DIVISION OF HIGHWAYS
STATE OF NORTH CAROLINA



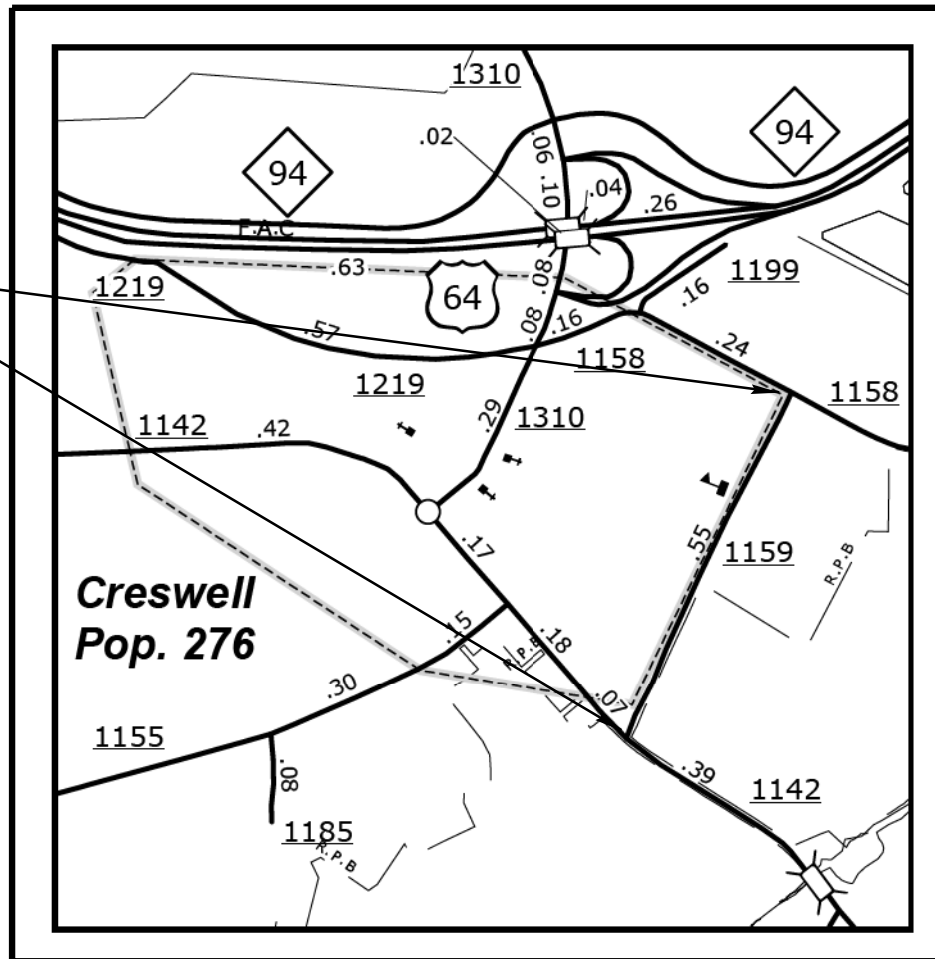
STATE	STATE PROJECT REFERENCE NO.	SHEET NO.	TOTAL SHEETS
N.C.	2017CPT.01.05.20481.1 ETC.	4	
STATE PROJ. NO.	F.A. PROJ. NO.	DESCRIPTION	

STATE OF NORTH CAROLINA
 DIVISION OF HIGHWAYS
WASHINGTON COUNTY

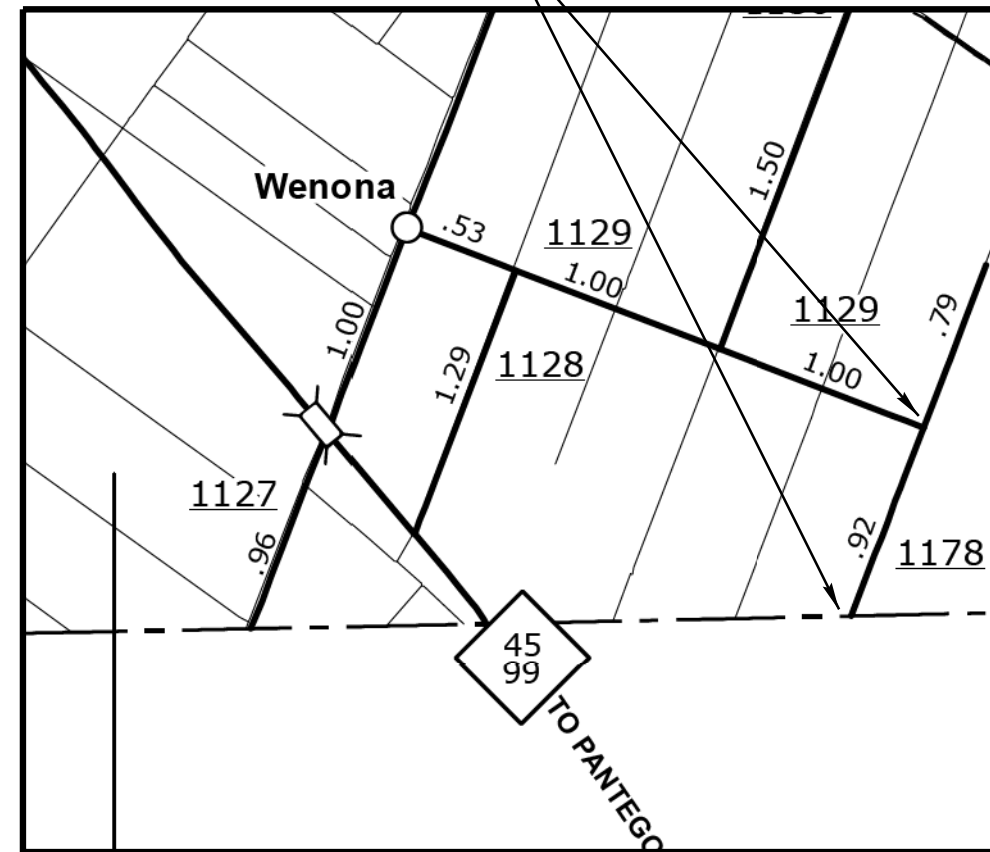
LOCATION: MAP #12 SR 1159 (FROM SR 1142 TO SR 1158) MAP #13 SR 1178 (FROM SR 1129 TO HYDE COUNTY LINE)

TYPE OF WORK: RESURFACING

MAP # 12



MAP # 13



CONTRACT NO.: DA00304 WBS ELEMENT.: 2017CPT.01.05.20481.1 ETC.

NOT TO SCALE

PROJECT LENGTH

MAP#12 WBS# 2017CPT.01.05.20941.1 = 0.50 MILES

MAP#13 WBS# 2016CPT.01.05.20941.1 = 0.93 MILES

Prepared in the Office of:
DIVISION OF HIGHWAYS

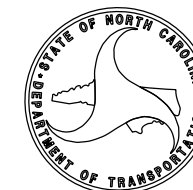
2012 STANDARD SPECIFICATIONS

LETTING DATE:

W.B. HOBBS, P.E.
 DIVISION PROJECT MANAGER

C.E. SLACHTA
 DIVISION PROPOSALS ENGINEER

DIVISION OF HIGHWAYS
 STATE OF NORTH CAROLINA

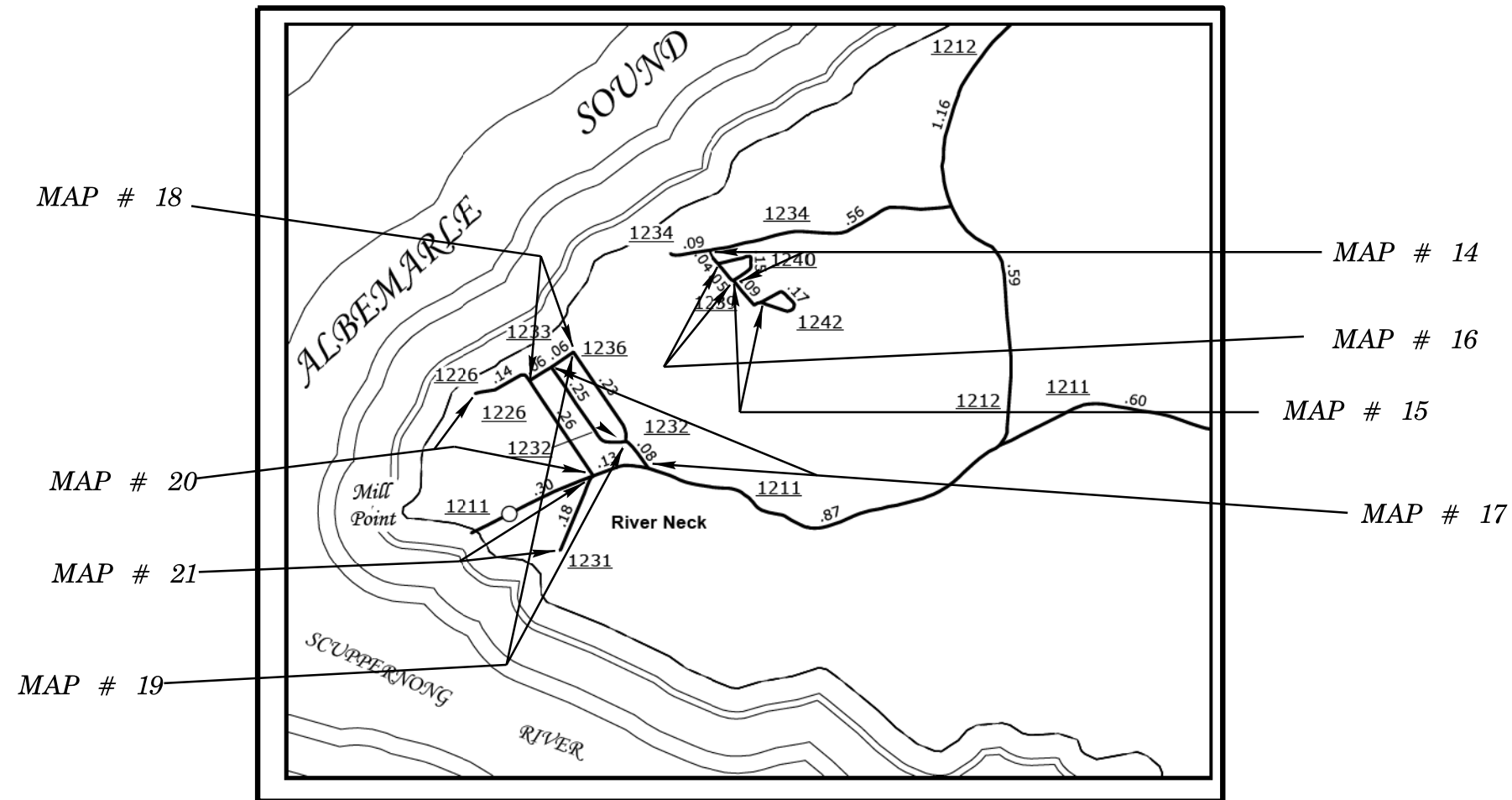


STATE	STATE PROJECT REFERENCE NO.	SHEET NO.	TOTAL SHEETS
N.C.	2017CPT.01.05.20481.1 ETC.	5	
STATE PROJ. NO.	F.A. PROJ. NO.	DESCRIPTION	

STATE OF NORTH CAROLINA
 DIVISION OF HIGHWAYS
TYRRELL COUNTY

LOCATION: MAP #14 SR 1239 (FROM SR 1234 TO SR 1240) /MAP #15 SR 1242 (FROM SR 1240 TO SR 1242)
 MAP #16 SR 1240 (FROM SR 1239 TO SR 1239) /MAP #17 SR 1232 (FROM SR 1211 TO SR 1233)
 MAP #18 SR 1233 (FROM SR 1226 TO SR 1236) /MAP #19 SR 1236 (FROM SR 1233 TO SR 1232)
 MAP #20 SR 1226 (FROM SR 1211 TO DEAD END) MAP #21 SR 1231 (FROM SR 1211 TO DEAD END)

TYPE OF WORK: THIN LIFT RESURFACING



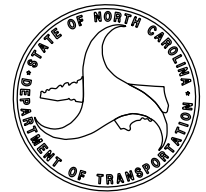
CONTRACT NO. : DA00304 WBS ELEMENT. : 2017CPT.01.05.20481.1 ETC.

NOT TO SCALE

PROJECT LENGTH	
MAP#14 WBS#	2017CPT.01.05.20892.1 = 0.09 MILES
MAP#15 WBS#	2017CPT.01.05.20892.1 = 0.26 MILES
MAP#16 WBS#	2017CPT.01.05.20892.1 = 0.15 MILES
MAP#17 WBS#	2017CPT.01.05.20892.1 = 0.33 MILES
MAP#18 WBS#	2017CPT.01.05.20892.1 = 0.12 MILES
MAP#19 WBS#	2017CPT.01.05.20892.1 = 0.23 MILES
MAP#20 WBS#	2017CPT.01.05.20892.1 = 0.40 MILES
MAP#21 WBS#	2017CPT.01.05.20892.1 = 0.18 MILES

Prepared in the Office of: DIVISION OF HIGHWAYS	
2012 STANDARD SPECIFICATIONS	W.B. HOBBS, P.E. DIVISION PROJECT MANAGER
LETTING DATE:	C.E. SLACHTA DIVISION PROPOSALS ENGINEER

DIVISION OF HIGHWAYS
STATE OF NORTH CAROLINA

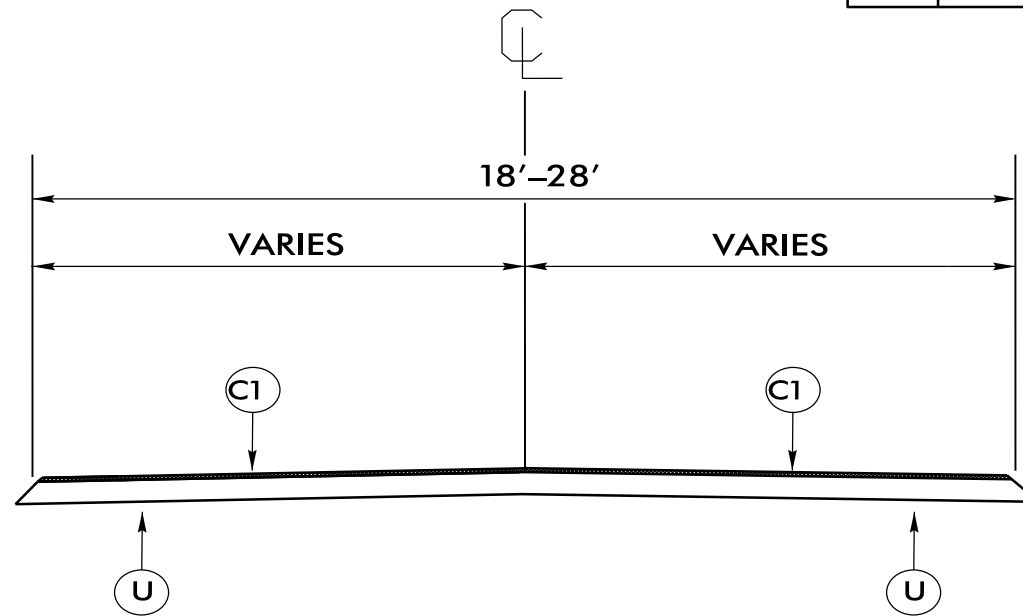


NOTES:

1. ALL PAVED S.R. ROADS TO BE RESURFACED TO THE ENDS OF THE RADII OR AS DIRECTED BY THE ENGINEER
2. EDGES, PAVEMENT WIDENING, INTERSECTIONS, AND BRIDGE FLARES ARE INCLUDED IN THE TABLE OF QUANTITIES
3. SHOULDERS AND DITCHES ARE TO BE CONSTRUCTED BY OTHERS

PROJECT REFERENCE NO.	SHEET NO.
2017CPT.01.05.20481.1, ETC.	7

PAVEMENT SCHEDULE	
C1	PROP. APPROX. 1.5" ASPHALT CONCRETE SURFACE COURSE TYPE SF9.5A, AT AN AVERAGE RATE OF 165 LBS. PER SQ.YD.
U	EXISTING PAVEMENT.



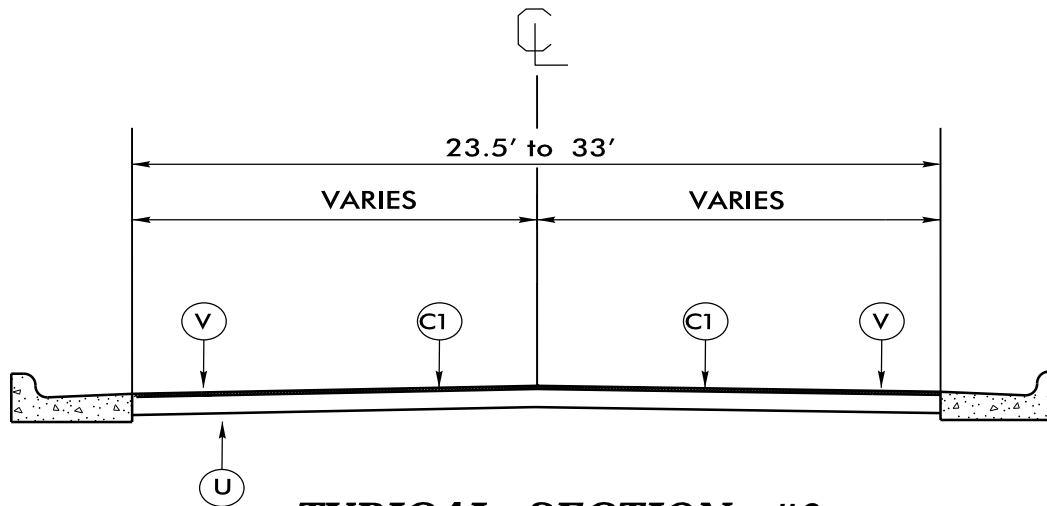
TYPICAL SECTION #1
 USE WITH MAP 1, 2, 3, 5, 7, 8, 9, 10, 11, 12 AND 13

NOTES:

1. ALL PAVED SERVICE ROADS TO BE MILLED AND RESURFACED TO THE ENDS OF THE RADII OR AS DIRECTED BY THE ENGINEER
2. EDGES, PAVEMENT WIDENING, INTERSECTIONS, AND BRIDGE FLARES ARE INCLUDED IN THE TABLE OF QUANTITIES
3. MILL 1.5" BELOW EXISTING CURB AND GUTTER
4. PAVEMENT MARKING TO BE APPLIED BY OTHERS

PROJECT REFERENCE NO.	SHEET NO.
2017CPT.01.05.20481.1, ETC.	8

PAVEMENT SCHEDULE	
C1	PROP. APPROX. 1.5" ASPHALT CONCRETE SURFACE COURSE TYPE SF9.5A, AT AN AVERAGE RATE OF 165 LBS. PER SQ.YD.
V	MILLING BITUMINOUS PAVEMENT 1.5" DEPTH
U	EXISTING PAVEMENT.



TYPICAL SECTION #2

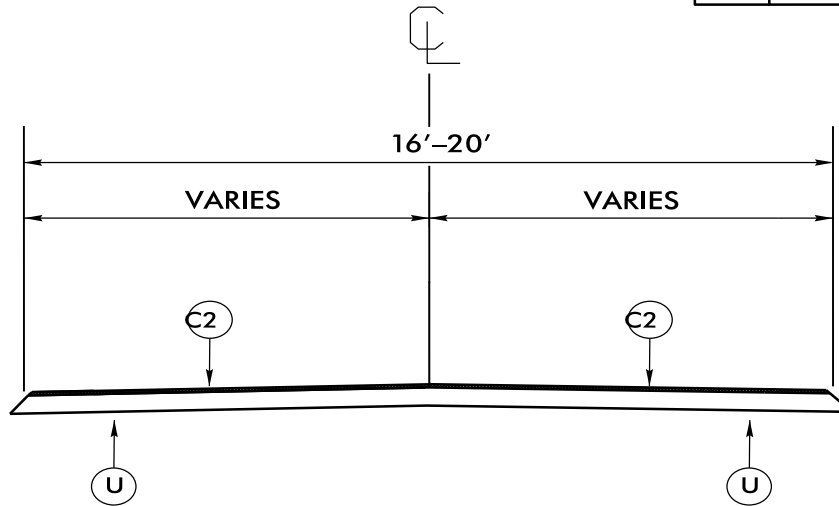
USE WITH MAP 4 & 6

NOTES:

1. ALL PAVED S.R. ROADS TO BE RESURFACED TO THE ENDS OF THE RADII OR AS DIRECTED BY THE ENGINEER
2. EDGES, PAVEMENT WIDENING, INTERSECTIONS, AND BRIDGE FLARES ARE INCLUDED IN THE TABLE OF QUANTITIES
3. SHOULDERS AND DITCHES ARE TO BE CONSTRUCTED BY OTHERS

PROJECT REFERENCE NO.	SHEET NO.
2017CPT.01.05.20481.1, ETC.	9

PAVEMENT SCHEDULE	
C2	PROP. APPROX. .75" ASPHALT CONCRETE SURFACE COURSE TYPE S 4.75 A, AT AN AVERAGE RATE OF 85 LBS. PER SQ.YD.
U	EXISTING PAVEMENT.



TYPICAL SECTION #3

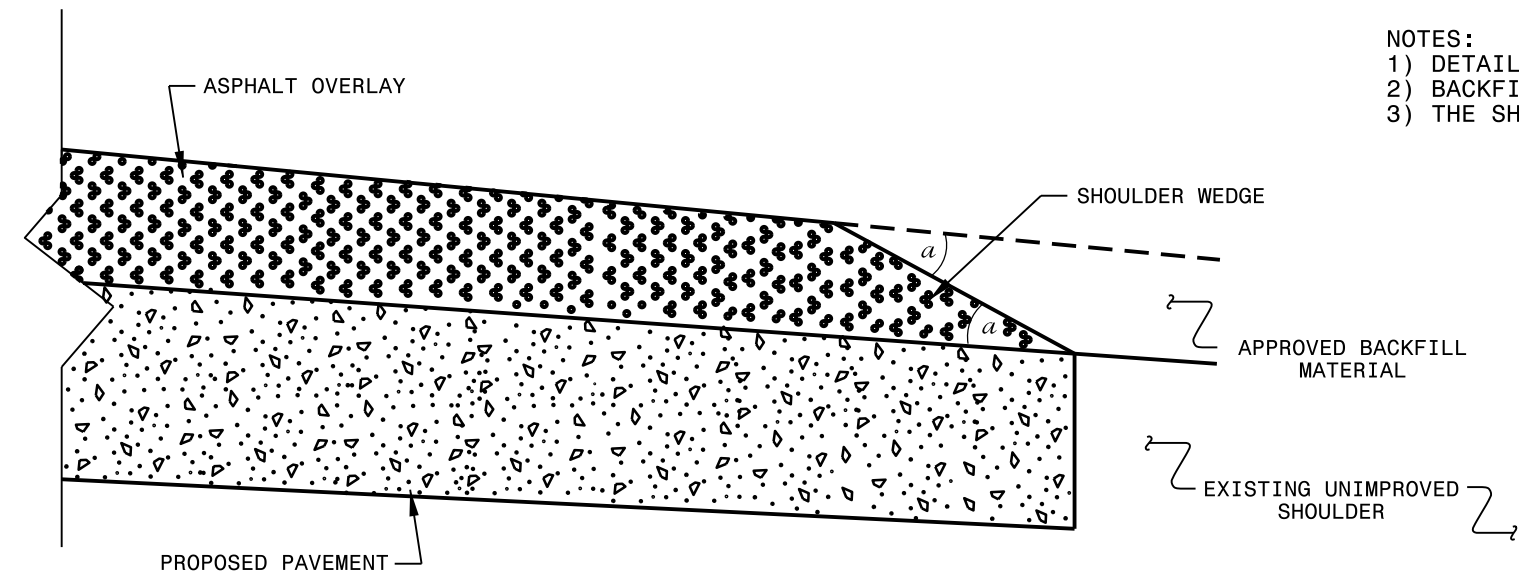
USE WITH MAP 14 Thru 28

PROJECT NO.	SHEET NO.	TOTAL NO.
2017CPT.01.05.20481.1, ETC.	10	

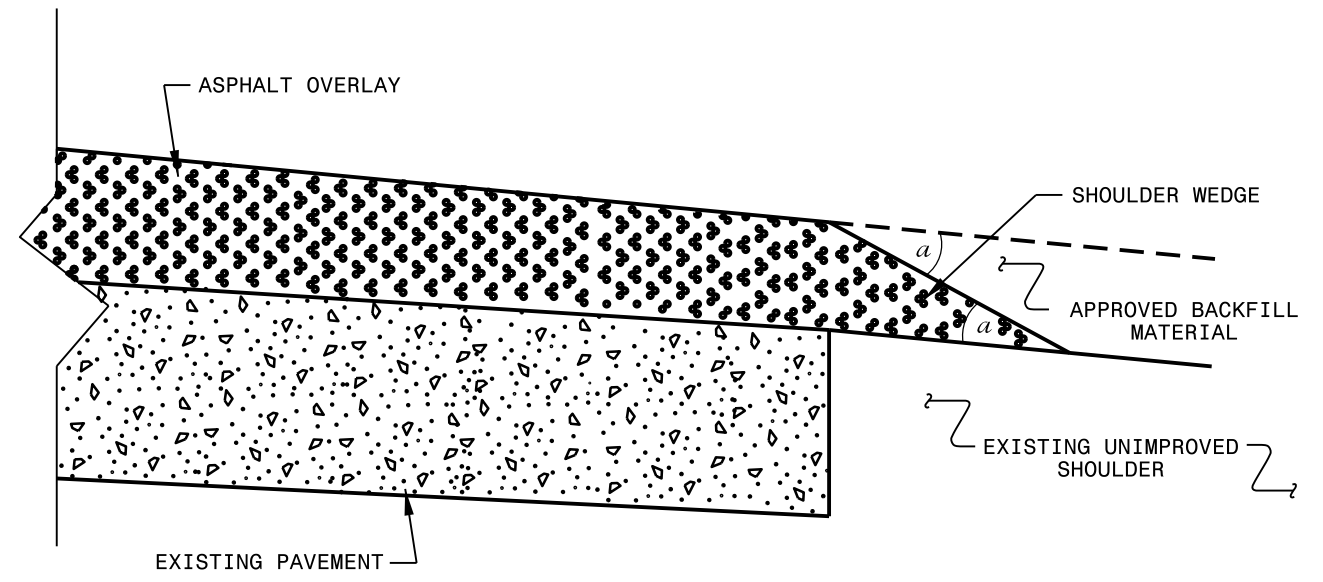
SUMMARY OF QUANTITIES

PROJECT	COUNTY	MAP	ROUTE	DESCRIPTION	TYP	LANES	LANE TYPE	FINAL SURFACE TESTING REQUIRED	WARM MIX ASPHALT REQUIRED	LENGTH	WIDTH	MOBILIZATION	1½" MILLING	SURFACE COURSE, SF9.5A	SURFACE COURSE, S4.75A	ASPHALT BINDER FOR PLANT MIX	ADJ. OF MANHOLES	ADJ. OF METER OR VALVE BOX
NO		NO			NO					MI	FT	LUMP SUM	SY	TONS	TONS	TONS	EA	EA
2017CPT.01.05.20481.1	Hyde	1	SR 1311	NC 94 TO SR 1305	1	2	2WU	NO	NO	2.1	20	1		2,250		151		
2017CPT.01.05.20481.1	Hyde	2	SR 1301	NC 45 TO DEAD END	1	2	2WU	NO	NO	0.57	20	*		611		41		
2017CPT.01.05.20891.1	Tyrrell	3	SR 1108	FROM SR 1105 TO SR 1125	1	2	2WU	NO	NO	1.92	20	*		2,057		138		
2017CPT.01.05.20891.1	Tyrrell	4	SR 1209 A	FROM US 64 TO END C & G	2	2	2WU	NO	NO	0.42	23.5	*	6,369	528		35	13	9
2017CPT.01.05.20891.1	Tyrrell	5	SR 1209 B	FROM END C & G TO SR 1214	1	2	2WU	NO	NO	0.74	28	*		1,108		74		
2017CPT.01.05.20891.1	Tyrrell	6	SR 1246	FROM US 64 BUS. TO DEAD END	2	2	2WU	NO	NO	0.09	33	*	2,000	159		11		4
2017CPT.01.05.20891.1	Tyrrell	7	SR 1205	FROM SR 1200TO DEAD END	1	2	2WU	NO	NO	0.81	20	*		868		58		
2017CPT.01.05.20941.1	Washington	8	SR 1160	FROM SR 1142 TO SR 1166	1	2	2WU	NO	NO	4.6	18	*		4,439		297		
2017CPT.01.05.20941.1	Washington	9	SR 1119	FROM SR 1122 TO 1121	1	2	2WU	NO	NO	0.17	20	*		182		12		
2017CPT.01.05.20941.1	Washington	10	SR 1167	FROM SR 1168 TO SR 1165	1	2	2WU	NO	NO	0.65	18	*		712		48		
2017CPT.01.05.20941.1	Washington	11	SR 1168	FROM SR SR 1160 TO SR 1167	1	2	2WU	NO	NO	0.41	18	*		527		35		
2017CPT.01.05.20941.1	Washington	12	SR 1159	FROM SR 1142 TO SR 1158	1	2	2WU	NO	NO	0.5	18	*		482		32		
2017CPT.01.05.20941.1	Washington	13	SR 1178	FROM SR 1129 TO HYDE COUNTY LINE	1	2	2WU	NO	NO	0.93	20	*		996		67		
2017CPT.01.05.20892.1	Tyrrell	14	SR 1239	FROM SR 1234 TO SR 1240	3	2	2WU	NO	NO	0.09	18	*			41	3		
2017CPT.01.05.20892.1	Tyrrell	15	SR 1242	FROM SR 1240 TO SR 1242	3	2	2WU	NO	NO	0.26	18	*			119	8		
2017CPT.01.05.20892.1	Tyrrell	16	SR 1240	FROM SR 1239 TO SR 1239	3	2	2WU	NO	NO	0.15	18	*			69	5		
2017CPT.01.05.20892.1	Tyrrell	17	SR 1232	FROM SR 1211 TO SR 1233	3	2	2WU	NO	NO	0.33	18	*			151	10		
2017CPT.01.05.20892.1	Tyrrell	18	SR 1233	FROM SR 1226 TO SR 1236	3	2	2WU	NO	NO	0.12	18	*			55	4		
2017CPT.01.05.20892.1	Tyrrell	19	SR 1236	FROM SR 1233 TO SR1232	3	2	2WU	NO	NO	0.23	18	*			106	7		
2017CPT.01.05.20892.1	Tyrrell	20	SR 1226	FROM SR 1211 TO DEAD END	3	2	2WU	NO	NO	0.4	16	*			163	11		
2017CPT.01.05.20892.1	Tyrrell	21	SR 1231	FROM SR 1211 TO DEAD END	3	2	2WU	NO	NO	0.18	18	*			83	6		
2017CPT.01.05.20942.1	Washington	22	SR 1107	FROM US 64 TO DEAD END	3	2	2WU	NO	NO	0.64	20	*			326	22		
2017CPT.01.05.20942.1	Washington	23	SR 1186	FROM SR 1107 TO DEAD END	3	2	2WU	NO	NO	0.06	18	*			28	2		
2017CPT.01.05.20942.1	Washington	24	SR 1171	FROM US 64 TO DEAD END	3	2	2WU	NO	NO	0.12	20	*			61	4		
2017CPT.01.05.20942.1	Washington	25	SR 1210	FROM SR 1108 TO SR 1211	3	2	2WU	NO	NO	0.12	20	*			61	4		
2017CPT.01.05.20942.1	Washington	26	SR 1211	FROM SR 1210 DEAD END	3	2	2WU	NO	NO	0.1	20	*			51	3		
2017CPT.01.05.20942.1	Washington	27	SR 1182	FROM NC 45 TO SR 1201	3	2	2WU	NO	NO	0.05	18	*			23	2		
2017CPT.01.05.20942.1	Washington	28	SR 1201	FROM SR 1182 TO END LOOP	3	2	2WU	NO	NO	0.66	18	*			303	21		
GRAND TOTAL										17.42		1	8,369	14,919	1,640	1,111	13	13

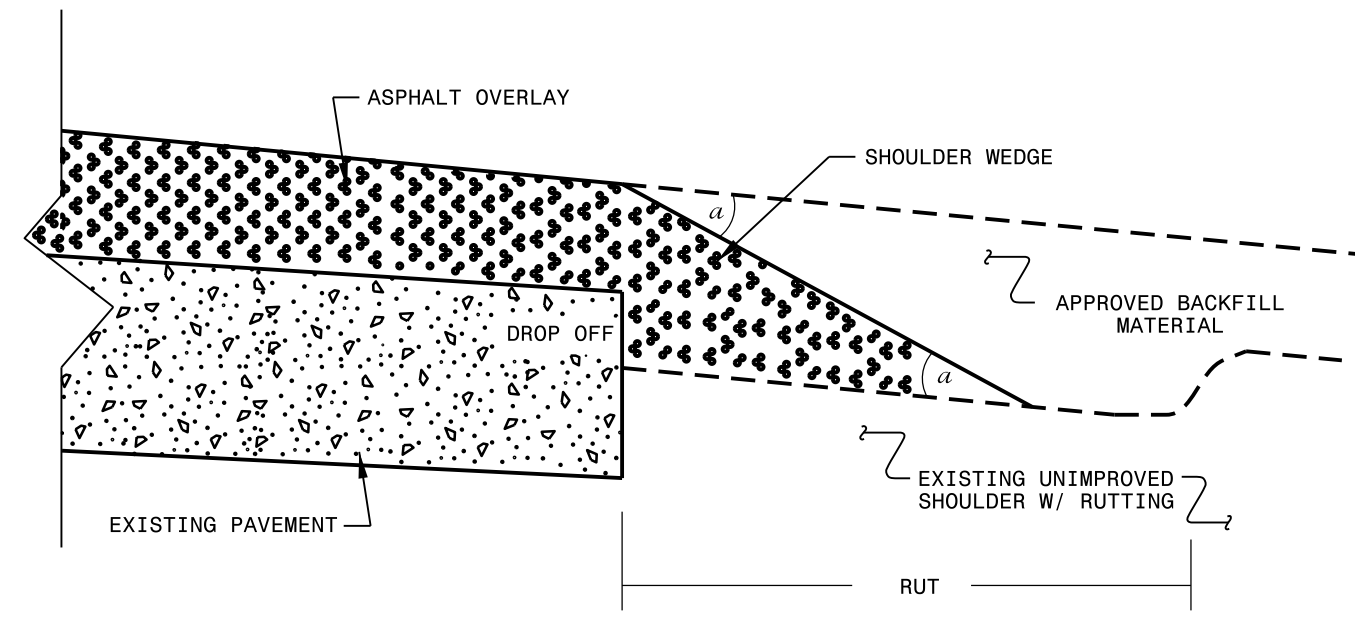
- NOTES:
- 1) DETAIL DOES NOT APPLY TO OGAFc AND ULTRA-THIN BONDED WEARING COURSE.
 - 2) BACKFILL SHOULDER WITH APPROVED MATERIAL.
 - 3) THE SHOULDER WEDGE DEVICE MAY BE DISENGAGED AT PAVED DRIVEWAYS AND SIDE STREETS.



SHOULDER WEDGE DETAIL
 (Resurfacing Projects w/ Widening or
 with Existing Paved Shoulder having no dropoffs)



SHOULDER WEDGE DETAIL
 (Resurfacing Projects w/ NO Widening)



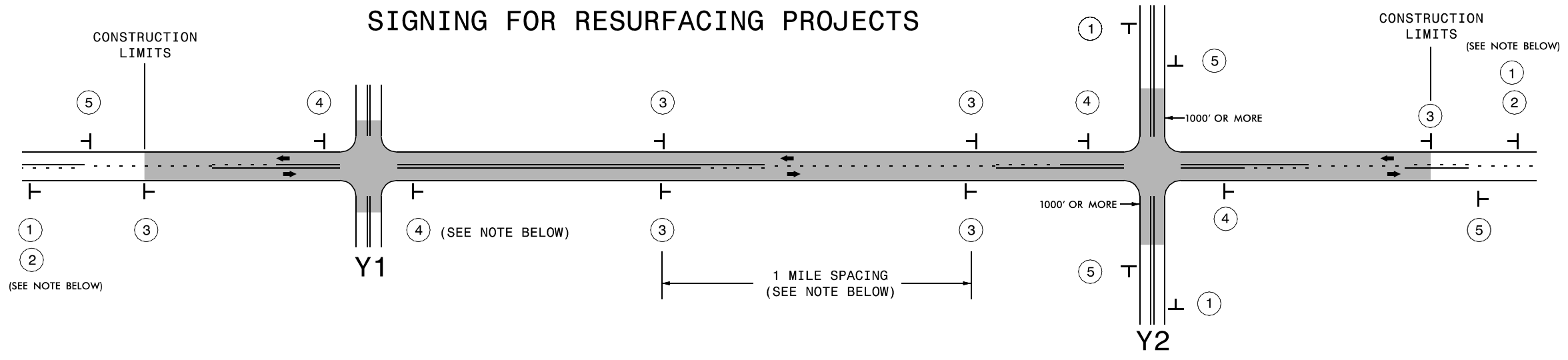
SHOULDER WEDGE DETAIL
 (Resurfacing Adjacent to
 Rutted Shoulder)

- SHOULDER WEDGE ANGLE = 30°

CONTRACT STANDARDS AND DEVELOPMENT UNIT			
Office 919-707-6950		FAX 919-250-4119	
SHOULDER WEDGE DETAILS			
ORIGINAL BY: T.SPELL	DATE: 7-19-11		
MODIFIED BY:	DATE: 10/16/12		
CHECKED BY:	DATE:		
FILE SPEC.: susr/details/stand/shoulderwedgedetail.dgn			

SYSTEMS DESIGN
 USER NAME

SIGNING FOR RESURFACING PROJECTS



LEGEND	
⊥	STATIONARY SIGN
→	DIRECTION OF TRAFFIC FLOW

MAINLINE (-L-) SIGNING

-Y- LINE SIGNING

SIGNING NOTES AND PLACEMENT PER DIRECTION	MAINLINE (-L-) SIGNING		-Y- LINE SIGNING	
	①	 W20-1 48" X 48"	PLACE 1000' PRIOR TO BEGINNING OF CONSTRUCTION LIMITS. ONLY USED ON -Y- LINES IF RESURFACING LIMITS EXTEND 1000' ALONG -Y- LINE.	<p>NO REQUIRED STATIONARY SIGNING FOR THE FOLLOWING -Y- LINE CONDITIONS:</p> <ol style="list-style-type: none"> 1) LESS THAN 1000' OF RESURFACING ALONG -Y- LINE 2) SUBDIVISION ROADS 3) DEAD END ROADS <p>WHEN PAVING/CONSTRUCTION ACTIVITIES PROCEED ACROSS AN UNSIGNED -Y- LINE, ADVANCE WARNING PORTABLE SIGNS SHALL BE USED ALONG THE -Y- LINE AS SHOWN BELOW. REMOVE UPON COMPLETION OF WORK.</p> <div style="display: flex; justify-content: space-around;"> <div style="text-align: center;"> W20-1 48" X 48" </div> <div style="text-align: center;"> W20-7 A 48" X 48" </div> </div> <p>PLACED 500' IN ADVANCE OF FLAGGER. PLACED 250' IN ADVANCE OF FLAGGER.</p>
	②	 W7-3aP 24" X 18"	#2 SIGN ONLY USED WHEN RESURFACING LIMITS ARE 2 OR MORE MILES IN LENGTH. ROUND UP TO NEXT WHOLE NUMBER. (NO FRACTIONAL OR DECIMAL NUMBERS)	
	③	 SP 13107 48" X 48"	PLACE INITIALLY AT THE CONSTRUCTION LIMITS AND SPACED 1 MILE APART THEREAFTER. IF NO -Y- LINES EXIST, PLACE 2ND SET 1/2 MILE FROM THE CONSTRUCTION LIMITS AND THEN SPACE 1 MILE THEREAFTER.	
	④	 SP 13106 48" X 48"	THESE ARE FOR -Y- LINES THAT ARE "THROUGH" ROADWAYS. DEAD END AND SUBDIVISION ROADS ARE NOT "THROUGH" ROADWAYS. INSTALL 500' +/- FROM EACH -Y- LINE APPROACH AS SHOWN ABOVE. FOR MULTIPLE -Y- LINES THAT ARE SEPARATED BY 0.25 MILES OR LESS, TREAT AS A SINGLE UNIT AND INSTALL WITHIN 500' OF EACH APPROACH. A MAXIMUM OF 2 SIGN SETS PER MILE. DO NOT INSTALL WHEN -Y- LINES ARE WITHIN 0.5 MILES FROM "END ROAD WORK" SIGN.	
⑤	 G20-2 A 48" X 24"	PLACE 500' FOLLOWING THE END OF CONSTRUCTION LIMITS.		

8/8/2013
 S:\T\U\WZTC\Resurfacing\2013Documents\New_Pr ocedures_05_09_2013\Resurfacing_AdvWarn_2Ln.dgn
 User:frmgarr.ett

DIVISION OF HIGHWAYS
STATE OF NORTH CAROLINA
DEPARTMENT OF TRANSPORTATION
WORK ZONE TRAFFIC CONTROL

**RESURFACING
ADVANCE WARNING SIGNS
FOR
RURAL AND SUBURBAN
2 LANE ROADWAYS**